

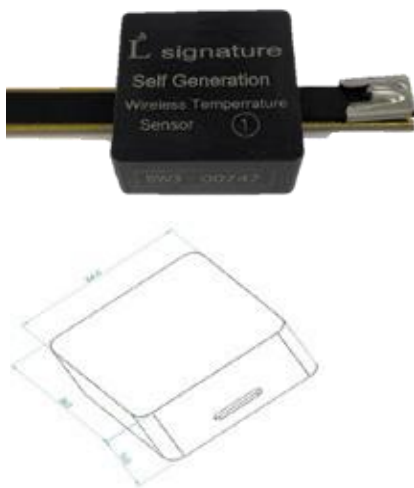
## Products

### BTH250



Start current	50A
Dimensions	W52 x D47 x H29
Weight	150g
Housing	Plastic, Non-conductive, Non-Flammable
Fastening	High elastic clamp
Installation location	Busbar (Width 50mm ~ 150mm)
Temperature probes	Contactable semiconductor type
Frequency	2.4 GHz ISM band
Temperature measurement	-20 ~ 200 °C
Transmission distance	10m ~ 15m (wireless)
Transmission cycle	4 Sec

### CTH010



Start current	5A
Dimensions	W36 x D36 x H16
Weight	35g
Housing	Plastic, Non-conductive, Non-Flammable
Fastening	Bandage with removable stainless steel band
Available	Busbar Max 100mm / Cable Min. 12Ø
Temperature probes	Contactable semiconductor type
Frequency	2.4 GHz ISM band
Temperature measurement	-20 ~ 200 °C
Transmission distance	10m ~ 15m (wireless)
Transmission cycle	4 Sec

## Transceiver



Nuber of Sensors Allowed	Max. 30 pcs
Number of wireless Channels	40 Channels
Wireless Reliability	Scheduling and Channel hopping support
Receiving Frequency	2.4 GHz ISM band
Receiving Distance	10m ~ 15m (Wireless)
Temperature meansurement method	Semiconductor Type
Temperature meansurement Scope	-20 ~ 200 °C
External communication support	RS-232 x 1 port
	RS-422 x 1 port
	RS-485 (MODBUS-RTU) x 1 port
	Ethernet (MODBUS-TCP) x 1 port
Demession	W162.3 x D100.3 x H36
Weight	220g
Housing	ABS Plastic
Fixing method	Direct Fastening (Screw)
Power	DC 12V, 1.5A

## Under Developement

### LORA Type Sensor



Housing	Plastic, Non-conductive, Non-Flammable
Temperature probes	backside of housing with contact to busbar
Temperature measurement	-20°C~200°C
Transmission distance	100m ~ 200m (wireless)
Transmit frequency	2.4GHz ISM band
Transmission cycle	4 Sec
Communication method	Star or Mash Type

### LTE Transceiver



Allowed Sensors	Max. 30 pcs
Wireless Channels	40 Channels
Wireless Reliability	Scheduling and Channel hopping support
Receiving Frequency	2.4 GHz ISM band, LTE
External communication support	RS-485(MODBUS-TCP) x 1Port
Transmission distance	LTE possible range
Option	Mobile App



01



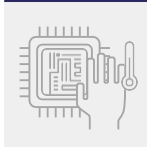
Self-Generation – Energy harvesting for semi-permanent use without additional power

02



Securing insulation safety through wireless 2.4GHZ communication technology

03



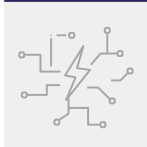
Reliable temperature measurement with contact-type semiconductor temperature sensor

04



System can be implemented without new construct for existing electric equipment

05



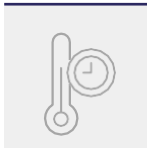
Technology applied on circuit composition to avoid electromagnetic interference in high voltage equipment

06



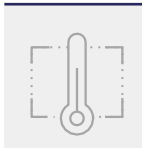
Predicting and replacement timing of electric equipment by digital temperature-data

07



Prevention of electric shocks with real-time temperature monitoring

08



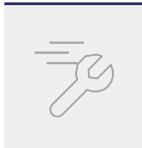
Temperature measurement blind spot of electric equipment without opening the door

09



Support for on-site customized product development applying original technology

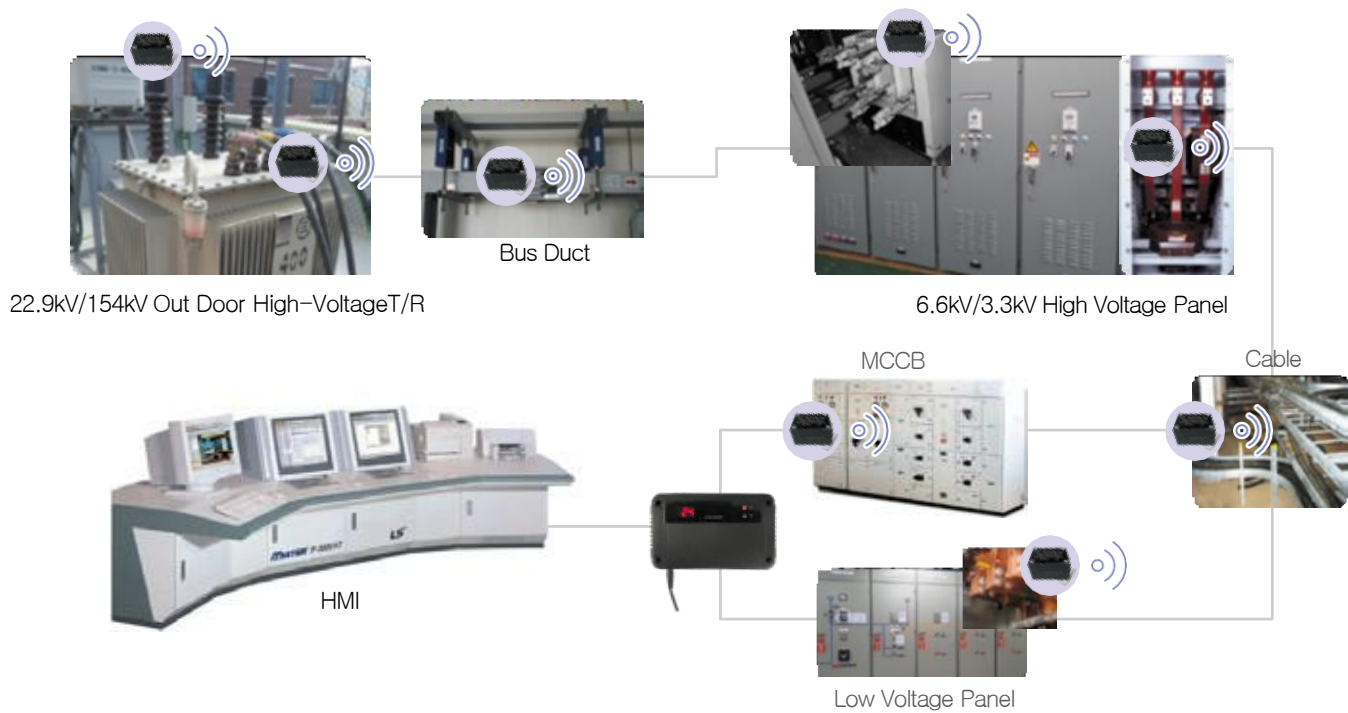
10



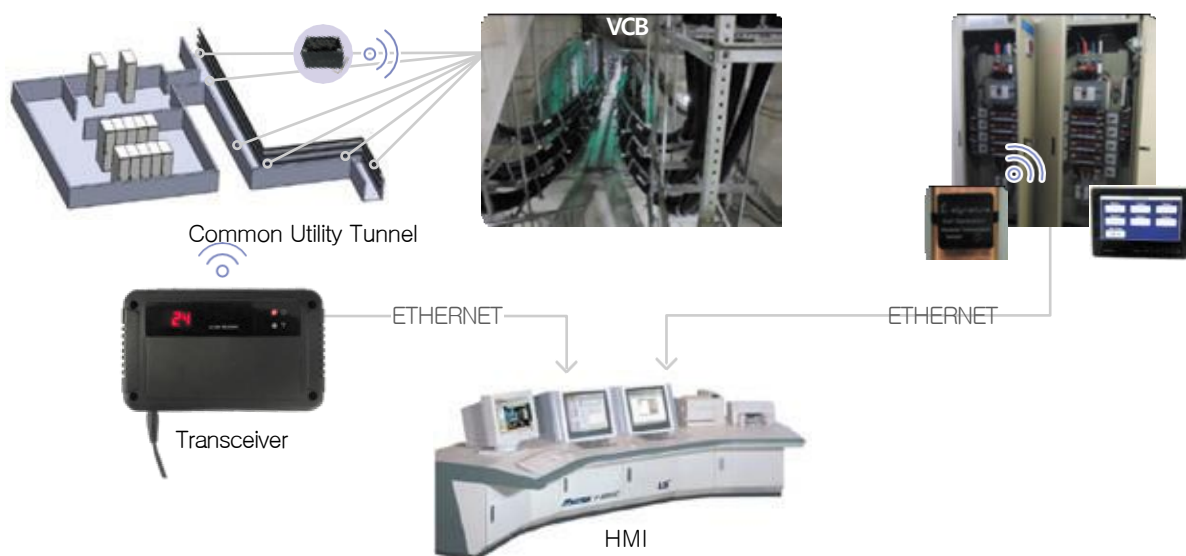
Rapid A/S response with original technology

# APPLICATION

## Electric Facility



## Common Utility Tunnel





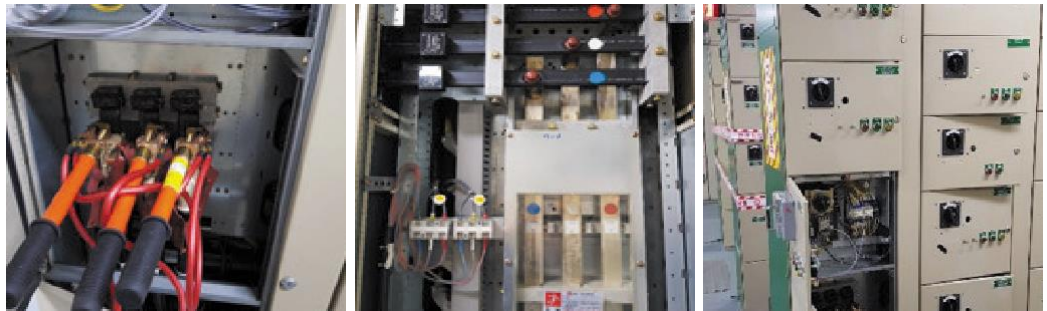


# PERFORMANCE

## Power Facility

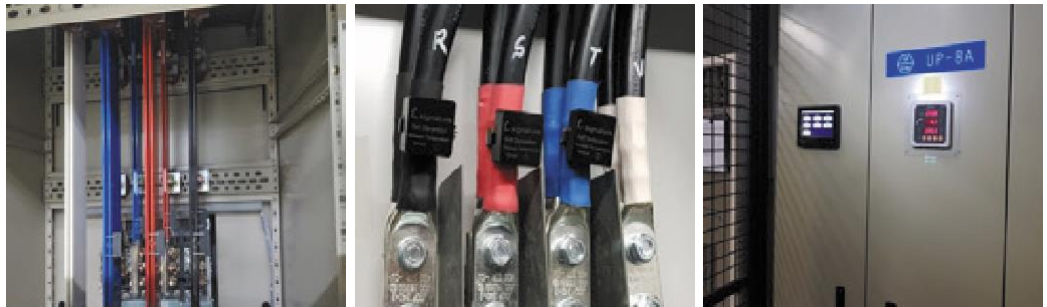


KEPCO Jinju Trasforming Station 154 KV T/R Bushing, Lead-in Busbar, Unmanned Transforming Station Power line



KEPCO Youngheung Thermal Power Plant 6.6KV High Voltage Pannel

## Telecom



KT Kangnam IDC, KT Yeouido IDC Low Voltage Panel

# PERFORMANCE

## Ship Building



**HHI** – Ulsan Plating Plant MCCB



**Pukyong National University** "Baik-Kyung-Ho" MSBD

## Water Supplyer



**Kwater** Ducsan Purification MOLD TR Panel



# PERFORMANCE

## Production Facility



**LS Cable & System** Donghai Plant Busduct



**Hyundai Steel** 154 KV Main VCB Panel, 33000V ACB Panel

## Others

Client	Reference	
Kwangmyung Electric	Smart Switch Gear	
Hyundai Electric	Sun-am Plant Factory	SK Hynix, KCC
Samsung Display	Test Bed	AI Box
POSCO	Po-hang Research Institute	

